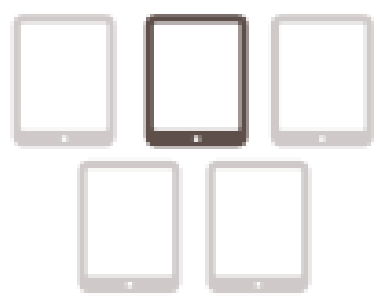


4

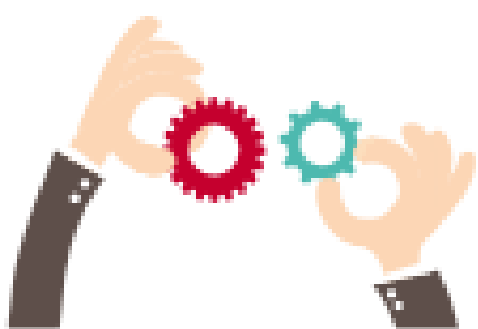
Keys to

**Asset
Refreshes
that Work**

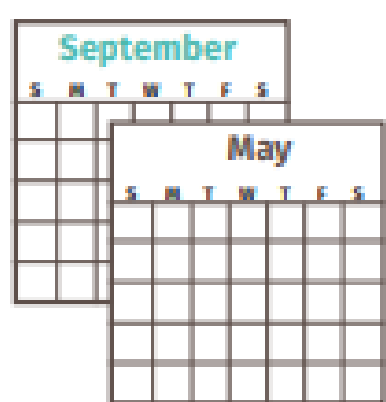
1. Follow the 20% rule. Replace one-fifth of your assets each year to keep technology compatible with modern classroom requirements.



2. Pilot new models. Plan a small-group pilot to work out bugs and understand the learning curve before deploying to a larger group.



3. Upgrade infrastructure. You may need to replace or expand components of your wired and wireless networks or replace obsolete network switches.



4. Deploy during the school year.

Refreshing assets during summer break may seem less disruptive. But testing devices is critical to a successful refresh, and it's easier when users are on site.

